

325 W 74th Place • Hialeah, FL 33014 • 305.231.1101 • www.cgsfl.com

4/16 TP 2K



Table of Contents

Section	Page
Mission Statement	2
Porsche Design Tower	3-4
CGS History	5
GAP History	6
Jade Signature	7-8
Design & Innovation	9
Engineering	10
Dadeland Mall	11
Marina Palms	12
International Projects	13-14
Manufacturing Facility	15-16
Privé	17-18
Fenestration Testing & Product Approval	19
Field Installation	20
Mansions at Aqualina	21
1000 Ocean	22
Jade Ocean	23-24
Other Projects	25-26

Mission Statement

Continental Glass Systems is southern Florida's premiere glazing contractor. Our mission is to provide you, the client, with the highest quality single-source enveloping services available. Whether you are a developer, general contractor, or architect, Continental Glass Systems stands ready to provide you with efficient comprehensive solutions to your building demands, while never losing sight of your visionary goals. From engineering and design to fabrication and installation, our extensive team of professionals are equipped to bring your architectural and structural design to a gleaming reality on time and on budget. We specialize in hurricane resistant products and have extensive experience providing hurricane protection to many building projects.

Porsche Design Tower

When completed the Porsche Design tower will be the tallest building in Sunny Isle Beach, Florida standing at 641 feet. One of the most unique features will be the highly publicized robotic parking garage that enables residents to have their cars parked right inside their unit.

At 57 stories and cylindrical in shape, the tower will host spectacular views of the ocean. Floor to ceiling hurricane resistant windows and glass railings will adorn all balconies.

Location

Sunny Isles Beach, FL

Architect

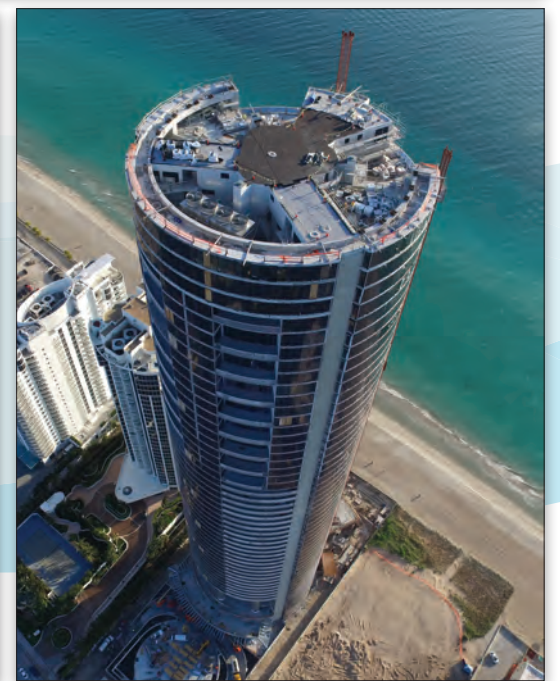
Sieger Alvarez Architectural Parternership

General Contractor

Coastal Construction LLC

Developer

Dezer Development



Continental Glass Systems History

Founded in 2005, Continental Glass Systems LLC (CGS) is the result of genius, experience, and the relentless drive between owners Samir Moussa and Shlomo Epstein, creating today's powerhouse enveloping services company.

The company began when Samir Moussa; better known as "Sam" throughout the glazing industry; immigrated to the United States from Lebanon back in 1985 when he immediately found work with Glass Wall Corporation in Miami, Florida. Five years later Sam's tenacity and vision brought him the ownership of that company. He quickly expanded the company's reach and sales volume by inventing and producing a long string of well received government approved window and door systems. Sam ultimately sold Glass Wall, but his love of the business never waned.

In 2005 Sam Moussa got together with longtime friend and associate Shlomo Epstein, an accomplished builder in his own rights with over 40 years of construction experience to his credit. The two came to recognize a synergy that existed between them when it came to their approach to windows and construction. It was the perfect blend of talent, vision, and drive.



Shlomo Epstein

These two founders ultimately decided to combine the wealth of their respective experiences together forming the nucleus of today's Continental Glass Systems, LLC.

Since the company's inception, Continental Glass Systems flourished and quickly became a respected and trusted name amongst the major South Florida developers and construction companies. Its long list of accomplishments include the Porsche Design Tower in Sunny Isles Florida, the Baha Mar Hotel and Resort in Nassau Bahamas, and the luxury Jade Signature and Privé condominiums.

In early 2015 the company's reputation and mounting success came to the attention of Graham Architectural Products (GAP) and its President Brian Hurley. GAP is a part of Graham Capital, a well-known \$4 billion corporation

located in York Pennsylvania. The architectural division of Graham was seeking to expand and access the South Florida construction market. Meanwhile Continental was intrigued by the financial strength that Graham had to offer. The synergy was too good to pass up resulting in a mutually beneficial partnership with vision, reputation, and the capital creating the new foundation of today's Continental Glass Systems, LLC

Should your current or future construction plans call for rock solid engineering, superior glazing products, and professional installation, we urge you to contact us and let our history and depth of experience go to work for you.



Samir Moussa

Graham Architectural Products History

The roots of Graham Architectural Products reach all the way back to 1960, when founder Donald C. Graham used \$5,000 of borrowed capital to set up shop selling window design and tooling packages from the basement of a rented farmhouse in central Pennsylvania, just outside of York.

From those inauspicious beginnings emerged what is now the Graham Group, a collection of companies which together make numerous products through world-wide operating companies, including architectural windows and doors, curtain walls, plastics, construction materials, irrigation products and household appliances, in addition to investment management businesses.

Graham Architectural Products (GAP), one of the original operating businesses, began to manufacture window tooling in 1964 following the purchase of Marathon Tools and by 1970 was assembling window units on a contract basis. Two years later, it was manufacturing windows. In 1976, GAP was formally incorporated, and in 1979 a 72,000 square foot manufacturing facility was constructed in York for window production.

In 2009 Graham acquired FM Enterprises, a curtain wall manufacturer in Merrill, WI, to supplement the window business with a full line of curtain wall products. That is now Graham Architectural Products, Curtain Wall Solutions.

Then in 2010, GAP purchased the assets of Keystone Industries, a New Castle, PA, manufacturer of innovative European style windows and formed Graham Thermal Products (GTP) to provide new product offerings for customers seeking innovative and energy efficient windows and doors.

More recently, GAP acquired a significant equity and operating partner position in the business of Hialeah, FL-based CGS, broadening GAP's footprint in the southern United States while enhancing the company's hurricane impact portfolio.



Continental Glass Systems - Hialeah, FL
325 W 74th Pl, Hialeah, FL 33014
305-231-1101
www.cgsfl.com



Graham Architectural Products - York, PA
1551 Mount Rose Avenue, York, PA 17403-2909
717-849-8100
www.grahamwindows.com



Jade Signature

The newest tower in Fortune International's coveted Jade building collection, Jade Signature is a collaboration between prize winning architecture firm Herzog & de Meuron, Parisian design firm PYR and renowned landscape architect Raymond Jungles. What they have created is something the market has never seen before in Sunny Isles Beach. Featuring 192 spacious homes, elegant design and opulent amenities, this building stands out as a truly unique landmark.

Location

Sunny Isles Beach, FL

Architects

Herzog & de Meuron
Stantec / Add Inc.

General Contractor

Suffolk Construction

Developer

Fortune International



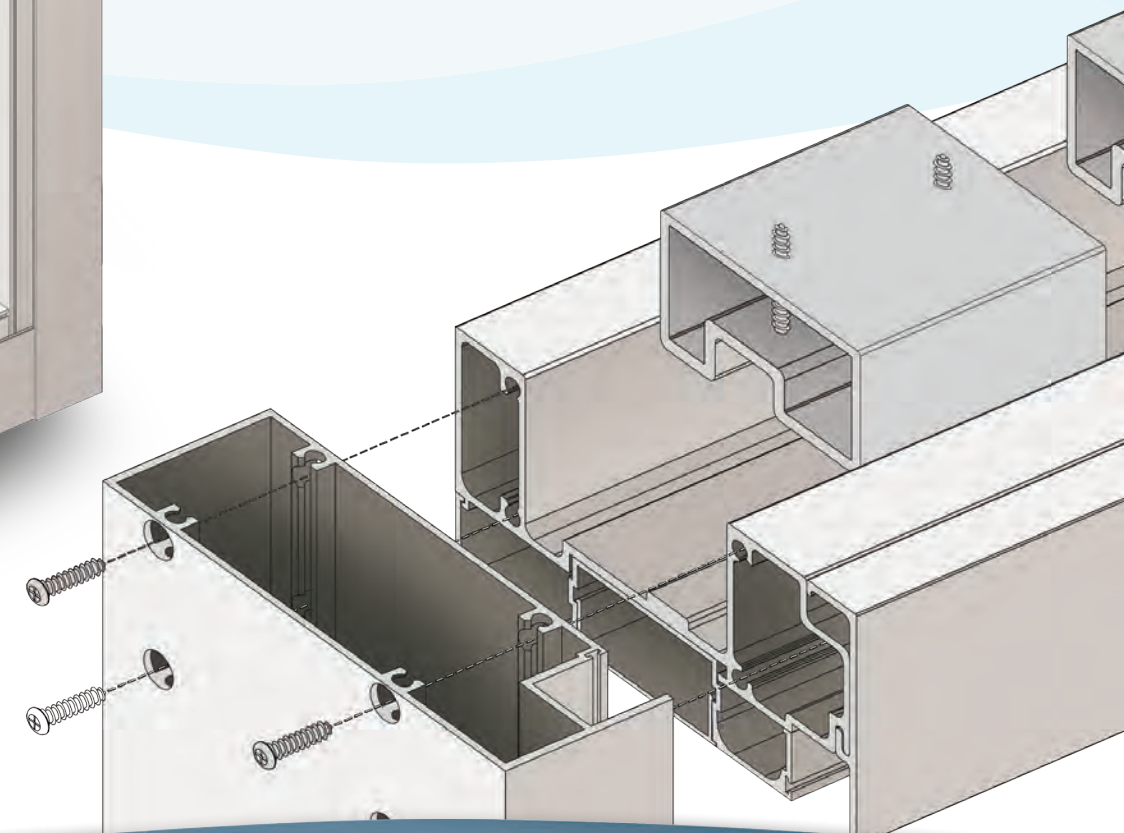
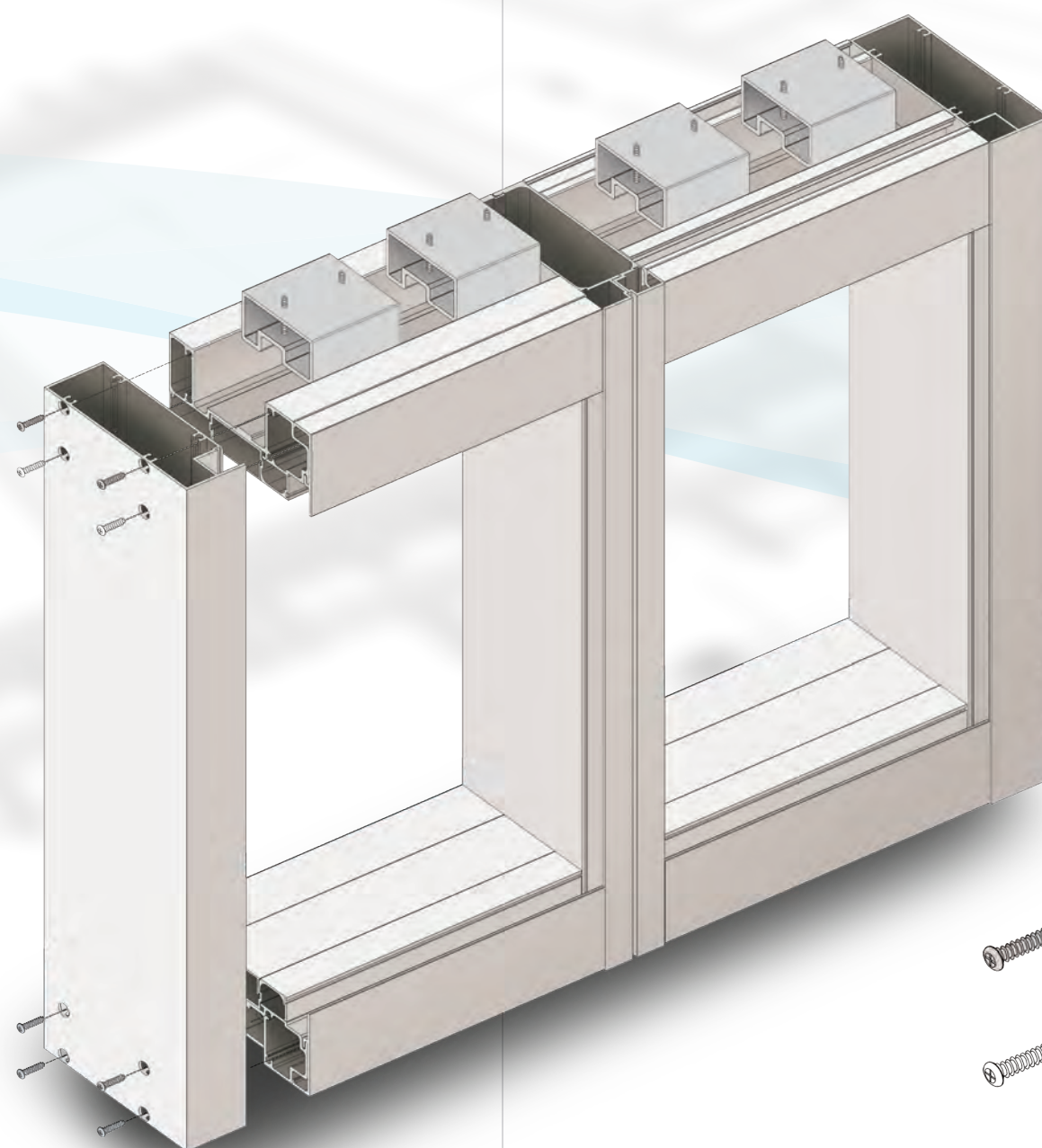
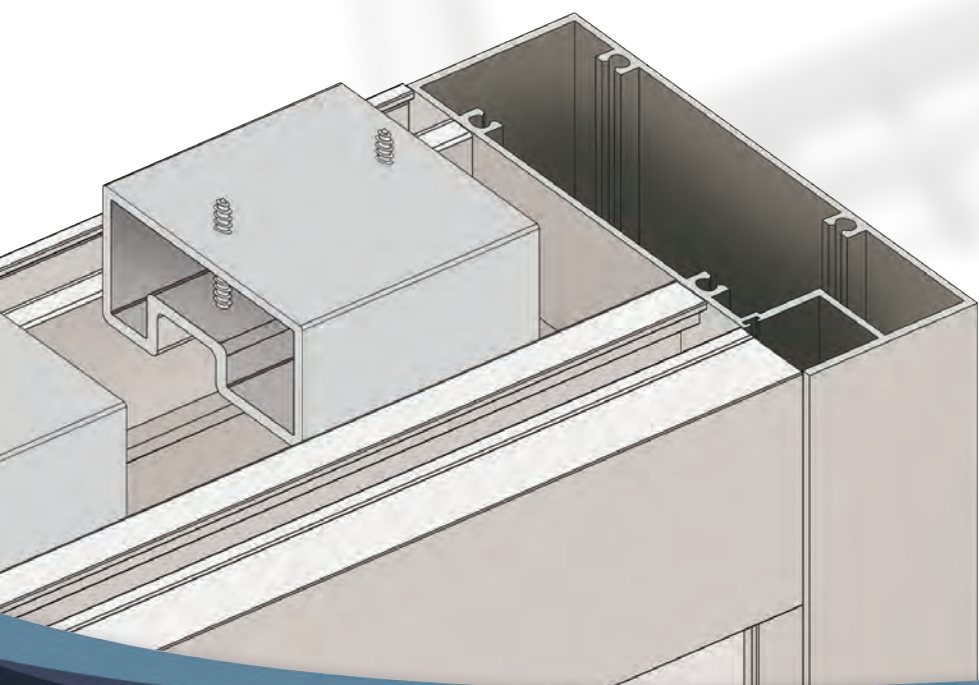
Design & Innovation

“We build buildings while building relationships”

Continental Glass Systems recognizes the importance of innovation and fostering a culture of continuous improvement. Our U.S. based manufacturing facilities thrive with engaging subject matter experts. These CGS Innovation designers, builders, makers, and inventors collaborate by getting answers and advice, sharing innovative ideas and solutions, and advancing concepts that are central to the evolution taking place in our industry today. Each product that results from these “industrial” designers leaves our facilities with stamp of pride.

Our builders want only the best for our customers and it shows with each shipped solution. We believe this is what makes for a better company and shows in our core values.

Our team utilizes the latest technology to assure your project is cutting-edge and stays on track. 3-D drawings, BIN and thermal modeling are some of the tools we use. We take your concept or idea through design to render then analysis to 3-D modeling. We then build a mock-up for testing and evaluation and finally an approved product for manufacture.



Engineering

“We transform your idea into a product”

Here at Continental Glass Systems our in-house engineers are dedicated to providing necessary shop drawings, fabrication packages and all engineering calculations. Available for project collaboration and expertise our engineers are readily available and communicate with project team members often.

We pride ourselves as being a “custom design” specialized company and offer new system design capabilities. We use advanced computer software for production, structural analysis, stress analysis, and thermal conductivity evaluations. We also use 3D printing for prototypes and custom designed parts evaluations.

Since we specialize in hurricane resistant products, we even have hurricane impact load and impact simulator capabilities. We work closely with GC, architects, owners, developers to guarantee optimum results. “We transform your idea into a product”

Dadeland Mall

Dadeland Mall, Miami's original and most iconic shopping center is anchored by Florida's largest Macy's, as well as Macy's Home Gallery & Kids, Saks Fifth Avenue, JCPenney, and Nordstrom. The mall covers more than 1.4 million square-feet and features more than 185 retail stores and restaurants. Dadeland Mall is located at 7535 N. Kendall Drive in Miami, Florida between the 826 Palmetto Expressway and US 1.

Location

Miami, FL

Architect

TCA Design

General Contractor

Plaza Construction

Developer

Simon Properties



Marina Palms

Marina Palms Yacht Club & Residences is the latest luxury condominium and yacht club project in the Miami area. The project is situated on over 750 of prime waterfront property and provides magnificent views of the entire maritime area including the Intracoastal Waterway and the Atlantic Ocean. The Marina Palms project utilizes CGS window wall, sliding glass doors, casements, and railing systems. Of particular note, this project is the first bayfront skysrise in the city of North Miami Beach in 25 years.

Location

North Miami Beach, FL

Architect

Slattery & Associates

General Contractor

Coastal Construction LLC

Developer

Plaza Group/Dev Star Group



International Projects

The Bahamas

Baha Mar - Nassau, Bahamas

The brand new Baha Mar project is situated on 1,000 acres, including over ½ mile of beachfront, on the island of New Providence in the Bahamas. The project features sliding glass doors, window wall, and steel and casement systems. Building oversized material for the largest casino in the Caribbean was definitely an exceptional challenge, mainly with limited installation resources and challenging installation conditions.

Location

Nassau, Bahamas

Architect

Michael Hong Architects

General Contractor

China Construction of America

Developer

Baha Mar Ltd.



Turks and Caicos Islands

Providenciales Hospital

Location

Providenciales, Turks and Caicos Islands

Architect

PM Devereux Architects

General Contractor

Johnson International

Developer

InterHealth Canada (TCI) Ltd. / Government of The Turks and Caicos Islands



Trinidad

One Woodbrook Place



Location

Port of Spain, Trinidad

Architect

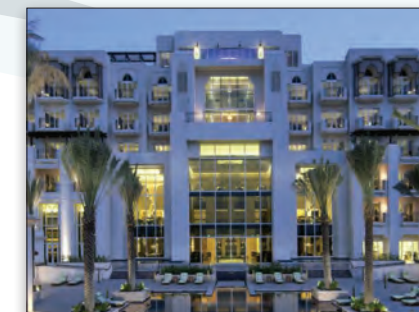
Home Construction Ltd.

Developer

HCL Group

Abu Dhabi

Eastern Mangroves



Location

Abu Dhabi, UAE

Architect

Hyder Consulting

General Contractor

BMX

Developer

Abu Dhabi Tourism Development and Investment

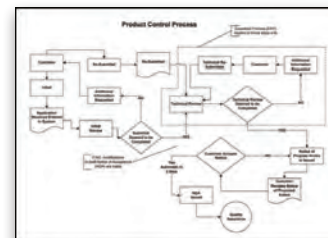
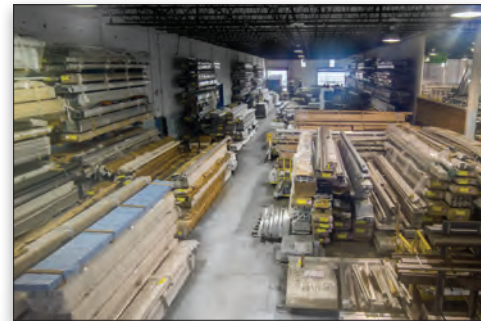
Manufacturing Facility

Made in USA

At our 200,000 square foot Florida based manufacturing facility we manufacture our products in a climate controlled environment assuring high quality and consistency.

We have the most modern assembly equipment available including:

- 5 Axis computerized CNC machines
- Shear and metal break
- Advanced mixing silicone pumps
- Custom designed glazing station



Our product lines include:

- Window Wall
- Sliding Glass Door
- Ribbon Windows
- Casement Windows
- Curtain Wall
- Swing Door (ADA)
- Horizontal Rolling Windows
- Project-Out Windows
- Single Hung Windows
- ACP (Aluminum Composite Panels)
- Railing System
- Skylights
- Ornamental Metals
- Steel Structures
- Louvers and Grills



Our facilities are in strict compliance with all OSHA safety standards and AAMA and ANSI quality processes. We also adhere to Florida Approval and Dade County Notice of Approval labeling processes for our hurricane resistant products. Because we are based in Florida we can provide timely field issue responses from our factory assuring no time delay at the project site.

Privé

Privé at Island Estates is located in the city of Aventura Florida and features 160 luxury units. The project is well underway and is expected to complete in 2017. In addition to individual units ranging from 2,585 to 9,000 square feet, Privé offers an additional 70,000 square feet of indoor amenity space. Privé utilizes a unique reinforced curtain wall system which spans the lobby area and is fabricated to withstand wind loads up to 120 psf.

Location

Williams Islands, FL

Architect

Sieger Suarez Architectural Partnership

General Contractor

Suffolk Construction

Developer

BH3 and Gary Cohen



Fenestration Testing & Product Approval

Fenestration Testing

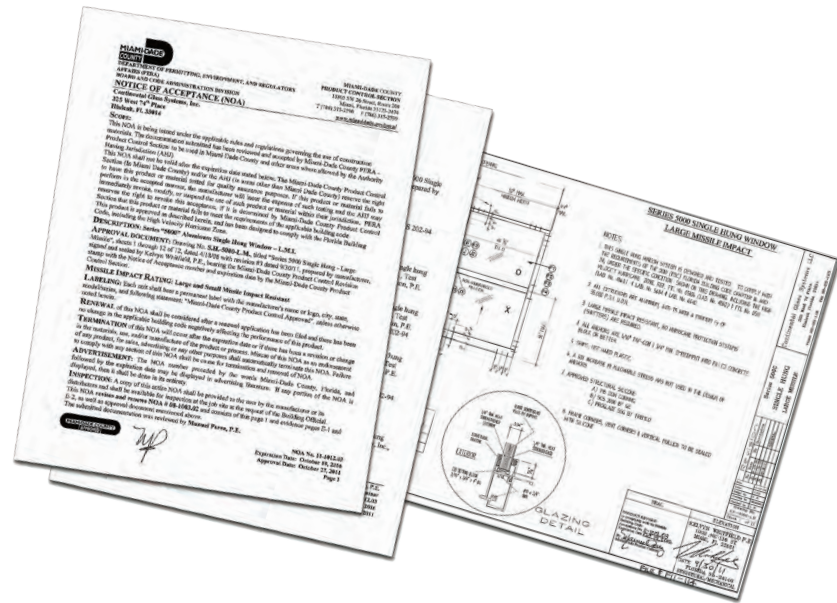
Our products undergo rigorous evaluation testing as stipulated by the Florida building code. This includes hurricane impact testing and pressure cycling. Additionally air infiltration, water penetration and structural loading test are performed to assure products meet the required project location design parameters.



Product Approvals

Once the testing is completed all results and product design details are submitted to the Florida code authorities for product approval.

Continental Glass complies with both the statewide Florida product approval system and the Miami-Dade County product approval process, the toughest most rigorous in the country.



Field Installation

Installing

Being a one-stop-shop means that Continental Glass also delivers and installs your product. We handle all site logistics and scheduling. We adhere to all safety standards and are OSHA trained and certified using OSHA approved field safety equipment and processes.

We use advanced installation equipment including 3-axis glass suction cups, hydraulic manipulators, lifts of all kinds and swing stages. Continental also has all tools and equipment needed for installing fire rated interior and exterior systems as well as various interior systems such as shower doors, partitions, decorative glass, spandrel, and railings.



Mansions at Acqualina

Completed in the summer of 2015 and opened in January of 2016, the Mansions at Acqualina tower represents the finest in oceanfront luxury. 47 stories of extraordinary craftsmanship provide its residents with breathtaking 360° views of the ocean, beach, and downtown Miami.

At 640 feet, "The Mansions" touches the maximum building height currently allowed by the FAA (Federal Aviation Administration) and is the fifth tallest building in this area of Florida. Of note, this scenic apex is soon to be matched by two forthcoming CGS projects also reaching for the skies: Porsche Design Tower and Jade Signature, both of which will be 640 feet upon completion.

Location

Sunny Isles Beach, FL

Architect

Cohen, Freedman, Encinosa & Associates

General Contractor

Coastal Construction LLC

Developer

The Trump Group

1000 Ocean

On the southernmost point of a picturesque peninsula, surrounded by the shimmering Boca Inlet, 1000 Ocean sits in luxurious seclusion. Less than an hour north of Miami, this elegant icon of modernist architecture features one-story penthouses, one and two-story beach villas, and a view of one of North America's most gorgeous locations.

Location

Boca Raton, FL

Architect

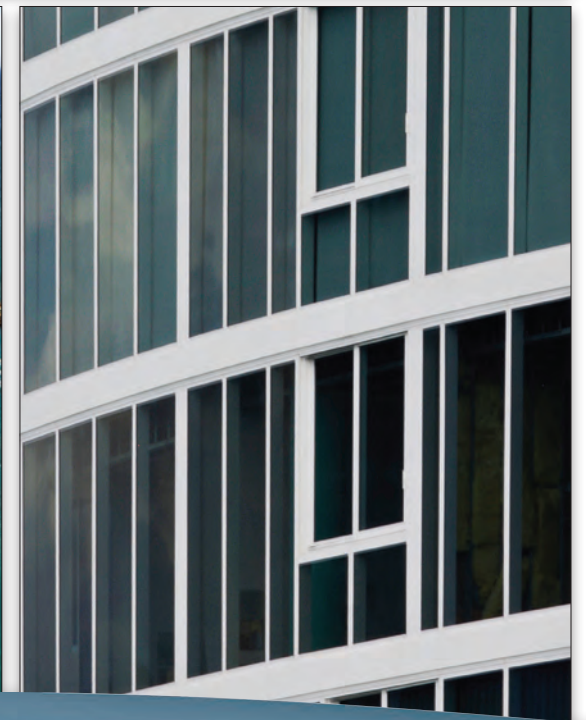
Garcia Stromberg

General Contractor

Pavarini Construction, LLC

Developer

LXR Luxury Resorts & Hotels



Jade Ocean

Designed by famed architect Carlos Ott and completed in 2008, this majestic 51-story twin tower is strengthened with impact glass in our window wall and sliding glass door systems. A marriage of art and function. Highlights of this building's distinctive design include an elegant "porte-cochère" styled entryway reaching through the north and south sides of the structure, and a six-story cascading waterfall to greet the occupants of this unique luxury residence.

Location

Sunny Isles Beach, FL

Architect

Carlos Ott

General Contractor

Coscan Construction LLC

Developer

Fortune International





Ft. Lauderdale "B" Hotel

Location

Fort Lauderdale, FL

Architect

Stonehill and Taylor

General Contractor

Focus Construction

Developer

Insite Development Group

Margaritaville

Location

Hollywood, FL

Architect

Adache Group

General Contractor

Coastal Construction
& Tishman Construction

Developer

Lon Tabatchnick



4001 North Ocean

Location

Delray Beach, FL

Architect

Roger Fry and Associates

General Contractor

Kast Construction

Developer

Kolter Urban Group



321 Ocean

Location

Miami Beach, FL

Architect

Enrique Norten

General Contractor

Coastal Construction LLC

Developer

AGM Aria Group

Ferrari Maserati

Location

Fort Lauderdale, FL

Architect

BDA Architects

General Contractor

Constructure

Developer

Experience Auto Group



Amalie Arena Tampa Bay Lightning Arena

Location

Tampa, FL

Architect

Ellerbe Becket

General Contractor

Mortenson Construction

Developer

Tampa Sports Authority



CONTACT US

For your next building project, let us make your vision become a reality. Using our extensive experience and proven capabilities coupled with our ingenuity and customer oriented staff, we look forward to working with you.

Contact us at 305-231-1101.

